

Humanscale



M/Connect 3

Suite of USB Power and Data Solutions

Designed to match the varying technological needs of today's workspaces, M/Connect 3 is a three-pronged solution to data and power connectivity.

M/Connect 3 is a centralized hub for connecting data and power to laptops and handheld devices. A vital tool for the agile and technological needs of today, M/Connect 3 improves access to essential ports while reducing cable clutter. Its modular design allows it to not only be easily serviced when needed, but seamlessly upgraded to match rapidly evolving trends.

Available in three models:

M/Power Charging Hub

Power
Made Easy



- Charging Station (Power Only)
- Compatible with USB-C and USB-A handheld devices
- Features 5 USB Ports including two dedicated for high-speed charging

USB Data Hub

Accessible Power
and Data



- Purpose built for USB Hub Monitors to provide USB connectivity and Power for Accessories
- Features 5 USB Ports including two dedicated for high-speed charging

Pro Dock

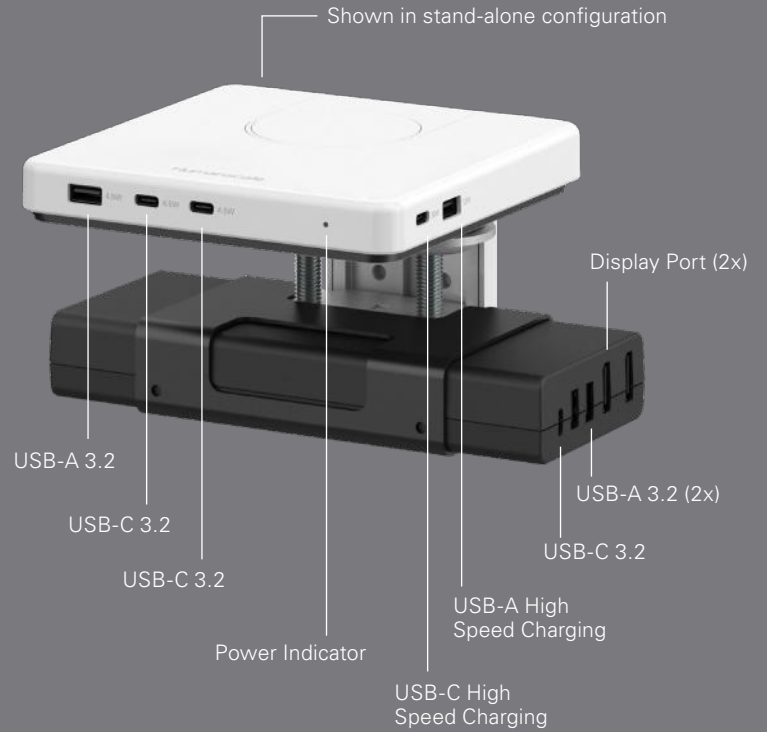
Your Complete
Power and Data Hub



- Pro-grade DP Alt Mode Docking Station
- Split Dock Technology keeps essential ports above the worksurface while fixed and additional connections are located beneath
- Features 8 USB Ports: 5 above work-surface, including two for high-speed charging, and 3 underneath for fixed connections.

Features

- Small profile takes up minimal space, increasing usable area on the worksurface
- Essential ports are accessible on the worksurface
- Includes two ports exclusively for high-speed charging
- Single Upstream cable USB-C cable connect and enables laptop charging (Pro Dock only)
- No Drivers Needed, simply plug and play (with DP Alt mode compatible laptop)
- Pro Dock models supports up to two 4K displays or one 5k display
- Designed to integrate into Humanscale monitor arms or as a stand-alone solution
- Limited 3- Year Warranty

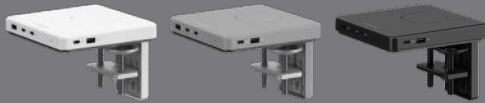


Available in 3 color options

White

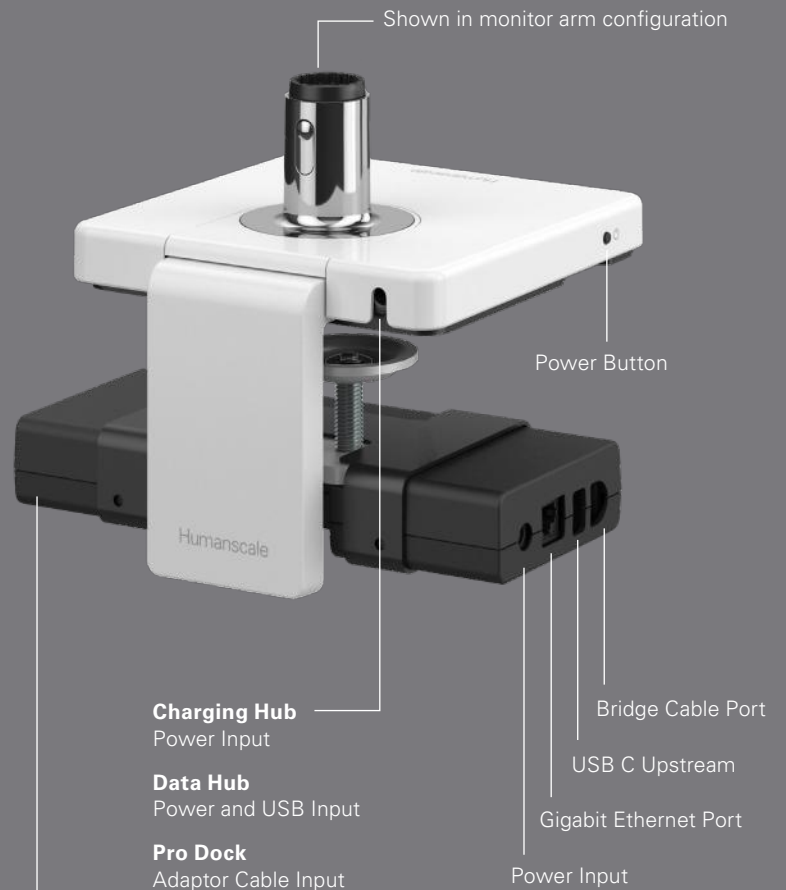
Gray

Black



Modular Design

Allows it not only to be easily serviced when needed, but also upgraded to match rapidly evolving trends



*Only Pro Dock comes with under desk hub

M/Connect 3

SPECIFICATIONS	M/POWER CHARGING HUB	USB HUB	PRO DOCK
Application	Above the worksurface	Above the worksurface	Above and below the worksurface
Mount Options		Clamp Bolt Through 12mm Sliding Desk Clamp 18mm Sliding Desk Clamp 25 mm Sliding Desk Clamp 30mm Sliding Desk Clamp No Mount RetroFit	
Dimensions	150mm W x 150mm D x 22.5mm H	150mm W x 150mm D x 22.5mm H	150mm W x 150mm D x 22.5mm H Under Surface: 191mm W x 90mm D x 24mm H
Weight	2.1 kg		
Compatible Devices	Cell phone (Charging) Tablet (Charging) Headphones (Charging) USB Accessories	Keyboard Mouse Cell phone (Charging) Tablet (Charging) Headphones Usb drive	Laptop Monitors Keyboard Mouse Cell phone (Charging) Tablet (Charging)
Screen Compatibility	N/A	N/A	2 screens, 4k 3840 x 2160 1 screen, 5k 5120 x 2880
Power Delivery	30w Max	30w Max	100w Max
Ports	Front <ul style="list-style-type: none"> • USB – A Port (4.5W (5V,0.9A) • USB – C Ports, 2: (4.5W (5V,0.9A) Side: Fast Charging <ul style="list-style-type: none"> • USB- A Port (12W (5V,2.4A) • USB-C Port (30W Max*, PD and QC compatible) <p>*Limited to 15W when adjacent USB-A charging port is in use</p>	Front: <ul style="list-style-type: none"> • USB – A Port (USB 3.2 (5V, 0.9A) • USB – C Ports, 2(USB 3.2 (5V, 0.9A) Side: Fast Charging <ul style="list-style-type: none"> • USB- A (12W (5V,2.4A) • USB-C (30W Max*, PD and QC compatible) <p>*Limited to 15W when adjacent USB-A charging port is in use</p>	Above The Work Surface Front <ul style="list-style-type: none"> • USB – A Port(USB 3.2 (5V, 0.9A) • USB – C Ports, 2 (USB 3.2 (5V, 0.9A) Side: Fast Charging <ul style="list-style-type: none"> • USB- A Charging Port (12W (5V,0.9A) • USB-C Charging Port (30W Max**, PD and QC compatible) (Limited to 15W when adjacent USB-A Port is in use) Below The Work Surface <ul style="list-style-type: none"> • USB – C Data Port (USB 3.2, 7.5W (5V, 1.5A) • USB – A Data Port, 2: (USB 3.2, (5V, 0.9A) <ul style="list-style-type: none"> • Ethernet: Gigabit Ethernet (10Mbit/100Mbit/1Gbit) • USB-C Upstream Port (100W PD Charging Max) • Bridge Cable Port • Display Port 1.4 (2x)
Laptop Compatibility	N/A	N/A	DP AltMode over USB C

ENVIRONMENT

Temperature – Operating	0°C to 40°C		
Temperature – Non Operating	-20°C to 60°C		
Relative Humidity- Operating	10% to 80% (non-condensing 5°C to 35°C)		
Relative Humidity – Non- Operating	5% to 90% (non-condensing-20°C to 60°C)		

AC POWER ADAPTER

Input Voltage	100 – 240VAC (50-60Hz)	100 – 240VAC (50-60Hz)	100 – 240VAC (50-60Hz)
Output Voltage	19 VDC, 2.36A	19 VDC, 2.36A	20VDC, 9A
Efficiency	Meets US DoE VI	Meets US DoE VI	Meets US DoE VI